

Papakura District Crime Report

Q2 2024



What is the NSPD?

Neighbourhood Support is a nationwide community-led movement that brings people and neighbourhoods together to create safe, resilient, and connected communities. We believe that a well-connected community helps to improve safety, resilience, and wellbeing for all.

The Neighbourhood Support Papakura District (NSPD) is the primary branch for the Papakura area. To learn more, visit our [website](#) and [Facebook page](#).



What is this Report?

The NSPD receives a weekly offences report from Police Headquarters in Wellington, which contains property offences for Counties/Manukau. The report contains information such as time, day, street, and descriptions of offences. We select the non-commercial property offences reported to the Papakura Police Station and present the data in an easy-to-understand format.* Our goal is to achieve three outcomes:

Our Reporting Goals

- 1** **To identify crime trends district-wide.** By understanding the rates and types of crime, all District residents can deploy their resources to make their best efforts to bring down crime rates.
- 2** **To identify crime trends for specific neighbourhoods.** With accurate information, neighbourhoods can take specific actions to reverse crime trends.
- 3** **To combat misinformation.** Social media often exaggerates crime statistics. By publishing accurate crime statistics, we hope to fight against false claims and mischaracterisations around crime and give residents accurate information to help make their own security decisions.

*All data within the Wellington report is given under strict protocols and can't be shared wholesale. Only NSPD personnel who have been police vetted can access the raw data from the report.

Crime Types

The NSPD Crime Report covers offences from the following seven crime categories. Understanding them and their differences will help you better interpret the data presented in the Crime Report. We've combined and simplified these categories so they are more easily understandable by the public.

Robbery— Robbery is the unlawful taking of another person's property with the intent to permanently deprive them of it. Robbery involves the use of force, threats, intimidation, or violence against the owner or another person present. In essence, it is a theft that is committed with force.

Theft— Theft is the unlawful taking of another person's property with the intent to permanently deprive them of it. In theft cases, the perpetrator takes the property without the owner's consent. Note: many of the offences in the Theft category include theft *from* a vehicle, as opposed to taking the vehicle itself.

Burglary— Is committed by anyone who enters any building, or part of a building, without authority and with intent to commit any offence that could lead to imprisonment.

Vehicle Theft— Involves an intention to take and keep a vehicle and/or to borrow without consent.

Manner of driving— Driving a vehicle in a reckless or unsafe manner.

Destruction of property (Wilful Damage)—Intentional or reckless damage to or destruction of property.

Disorderly behaviour—Socially unacceptable behaviour in a public place, or within hearing or view of a public place.



Q1 vs Q2 Offences

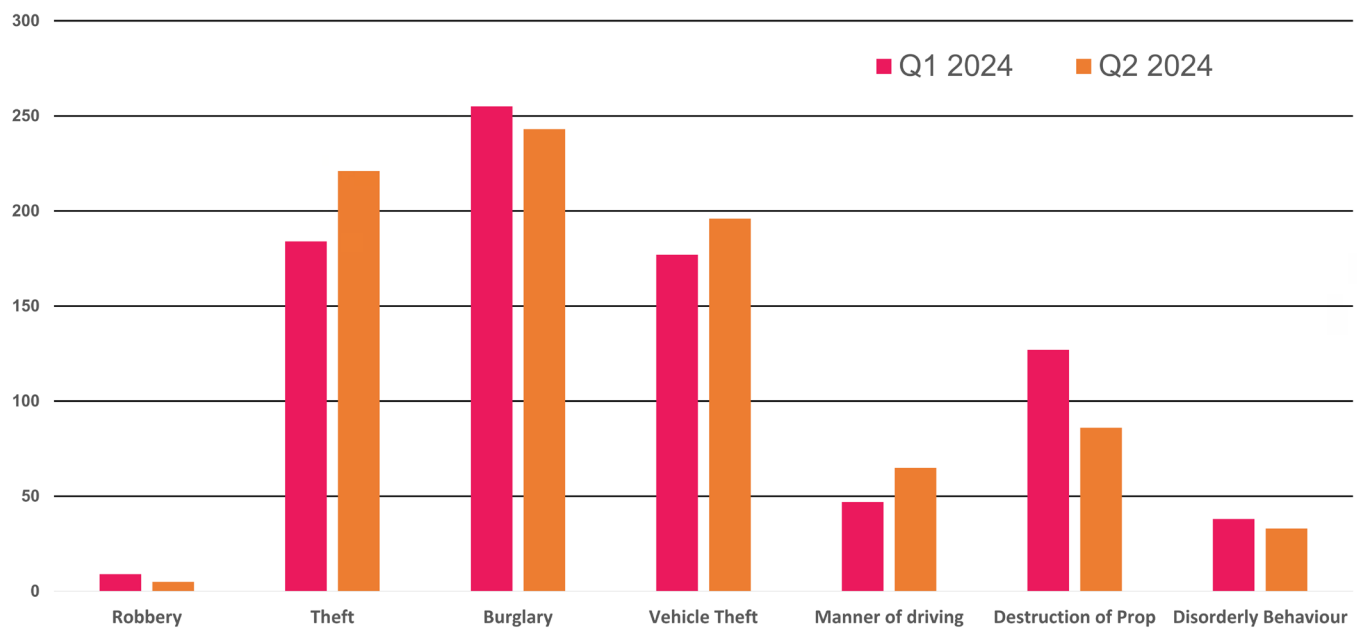
Table A shows total number of non-commercial property offences reported for the Papakura District for Q1 and Q2 of 2024.

Quarter	Robbery	Theft	Burglary	Vehicle Theft	Manner of Driving	Wilful Damage	Disorderly Behavior	Other	Total
Q1	9	184	255	177	47	127	38	76	913
Q2	5	221	243	196	65	86	33	82	931

Graph A shows total number of non-commercial property offences reported for the Papakura District for Q1 and Q2 of 2024. Does not include "Other" category.

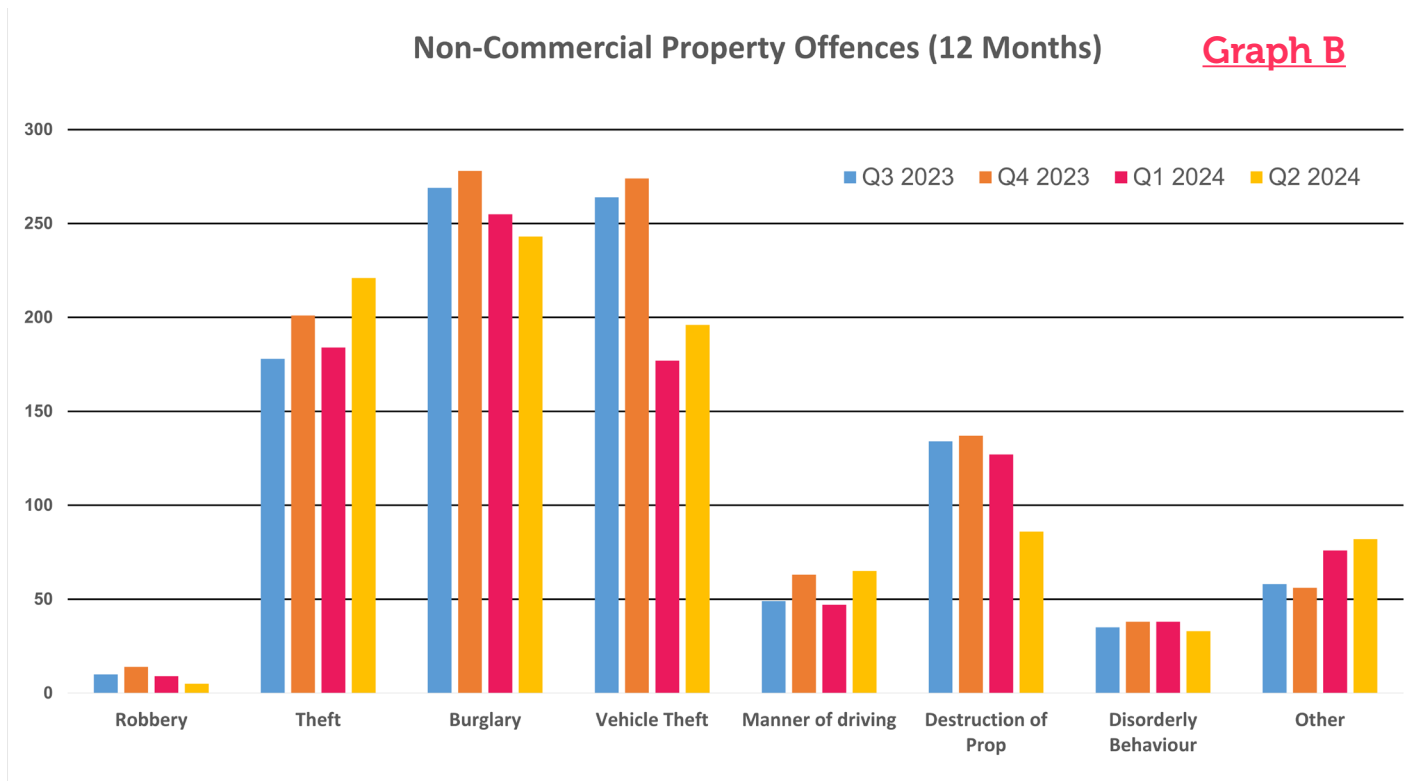
Graph A

Papakura District Non-Commercial Property Offences



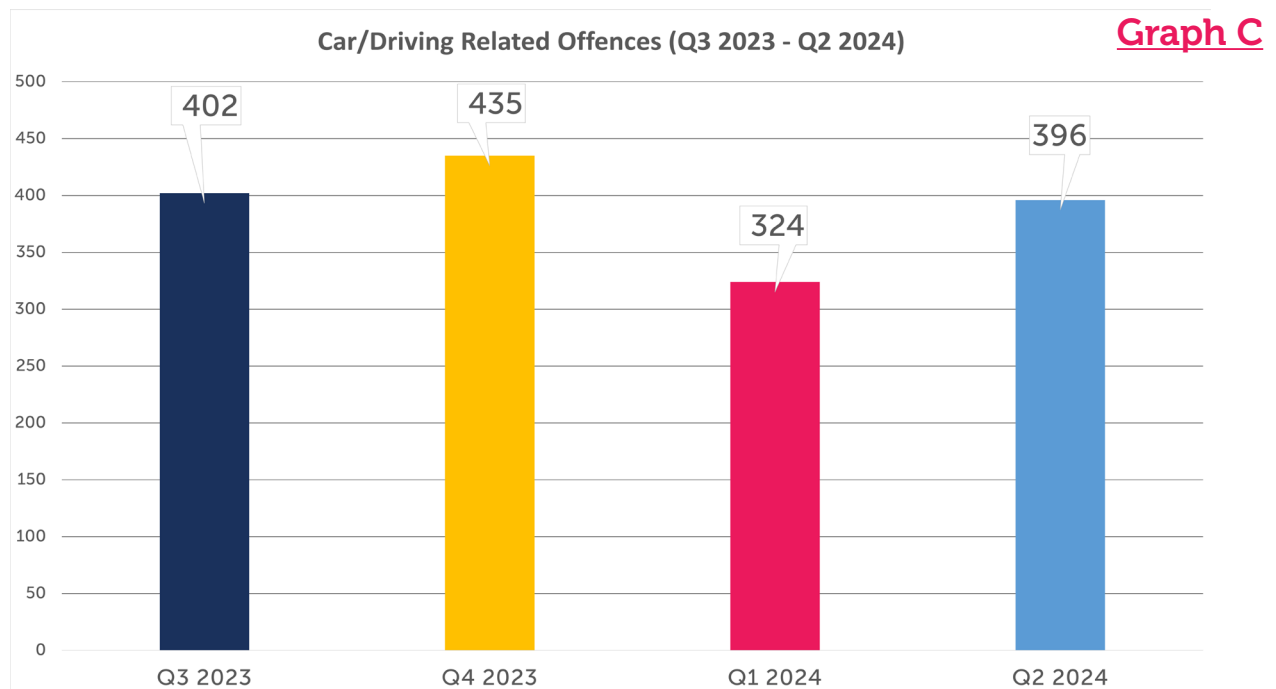
Non Commercial Property Offences (12 mos)

Graph B compares total number of non-commercial property offences reported for the Papakura District for the last four quarters (12 months).



Car/Driving Related Offences

Graph C compares total number of car and driving-related crimes reported for the Papakura District for the last four quarters (12 months). Offences include traffic violations like speeding and car theft/conversion.

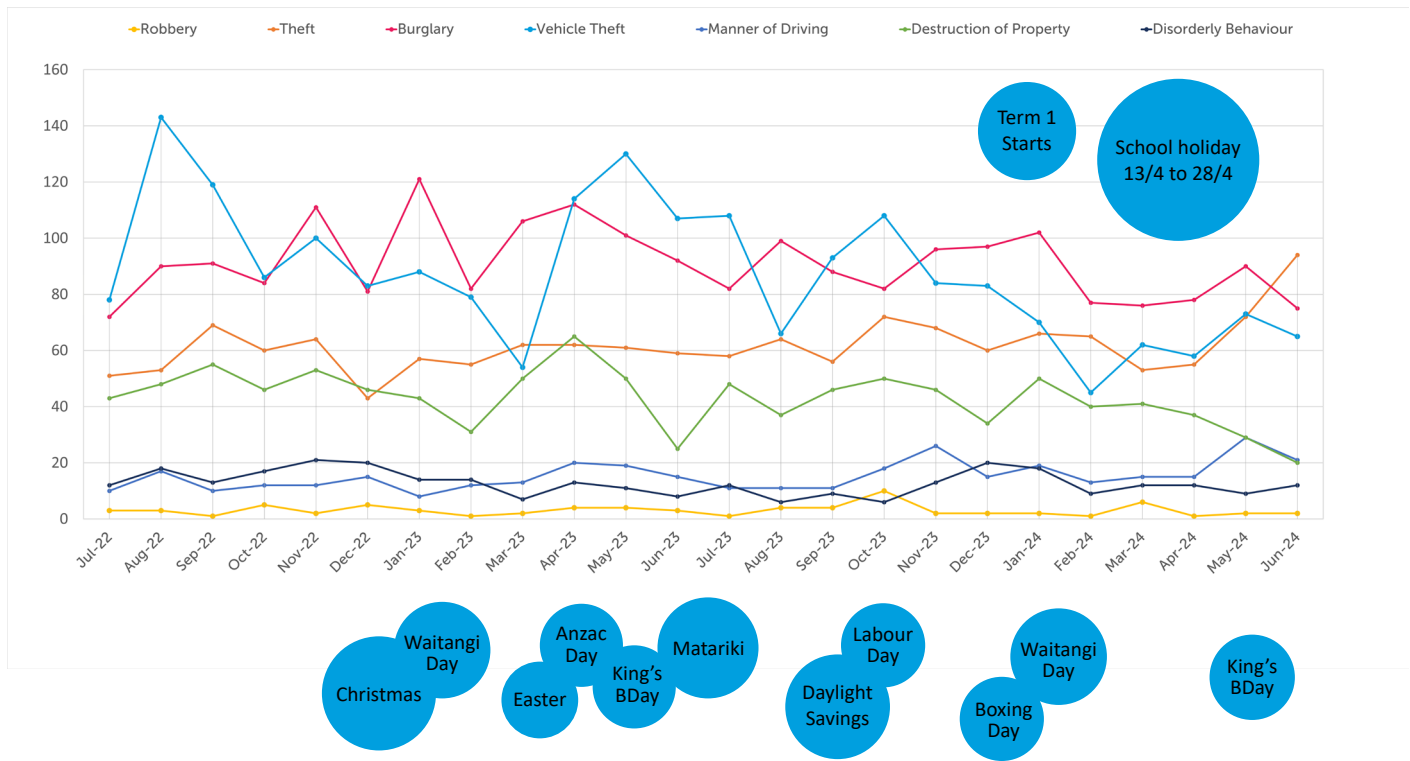


Offences by Month (24 Months)

Graph D shows monthly totals for all non-commercial property crimes for each category for the last 24 months.

Offences by Month (24 months)

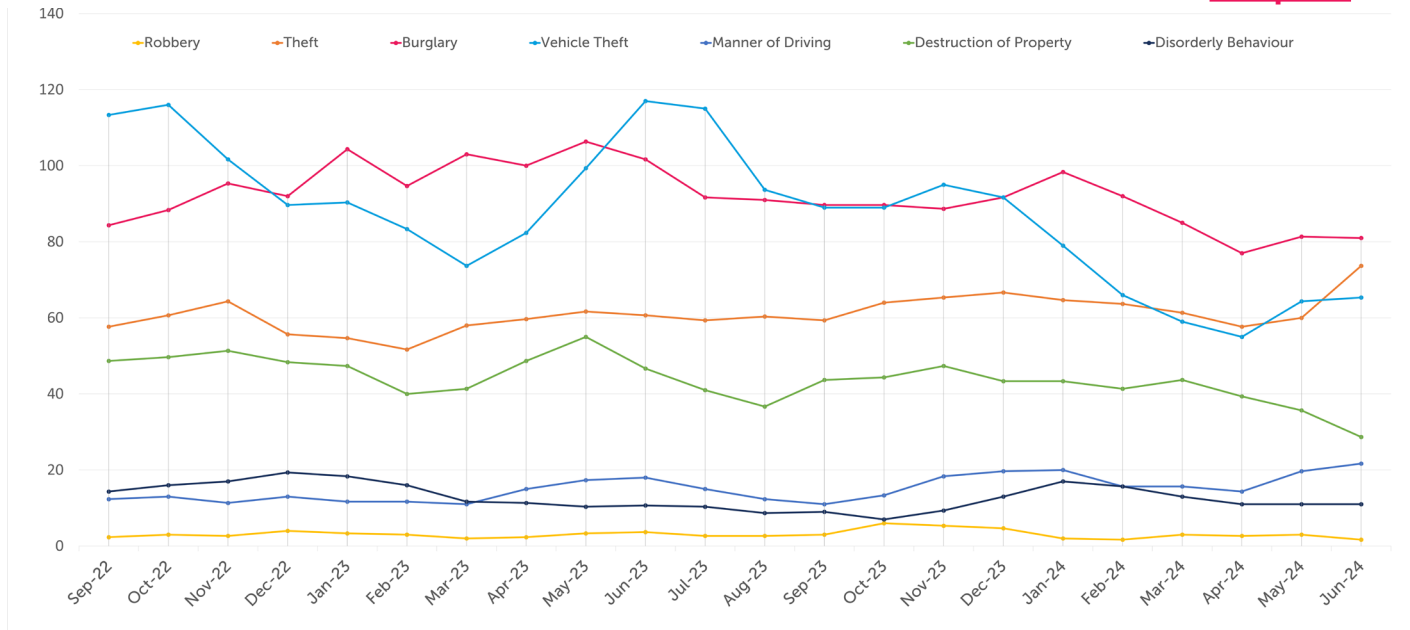
Graph D



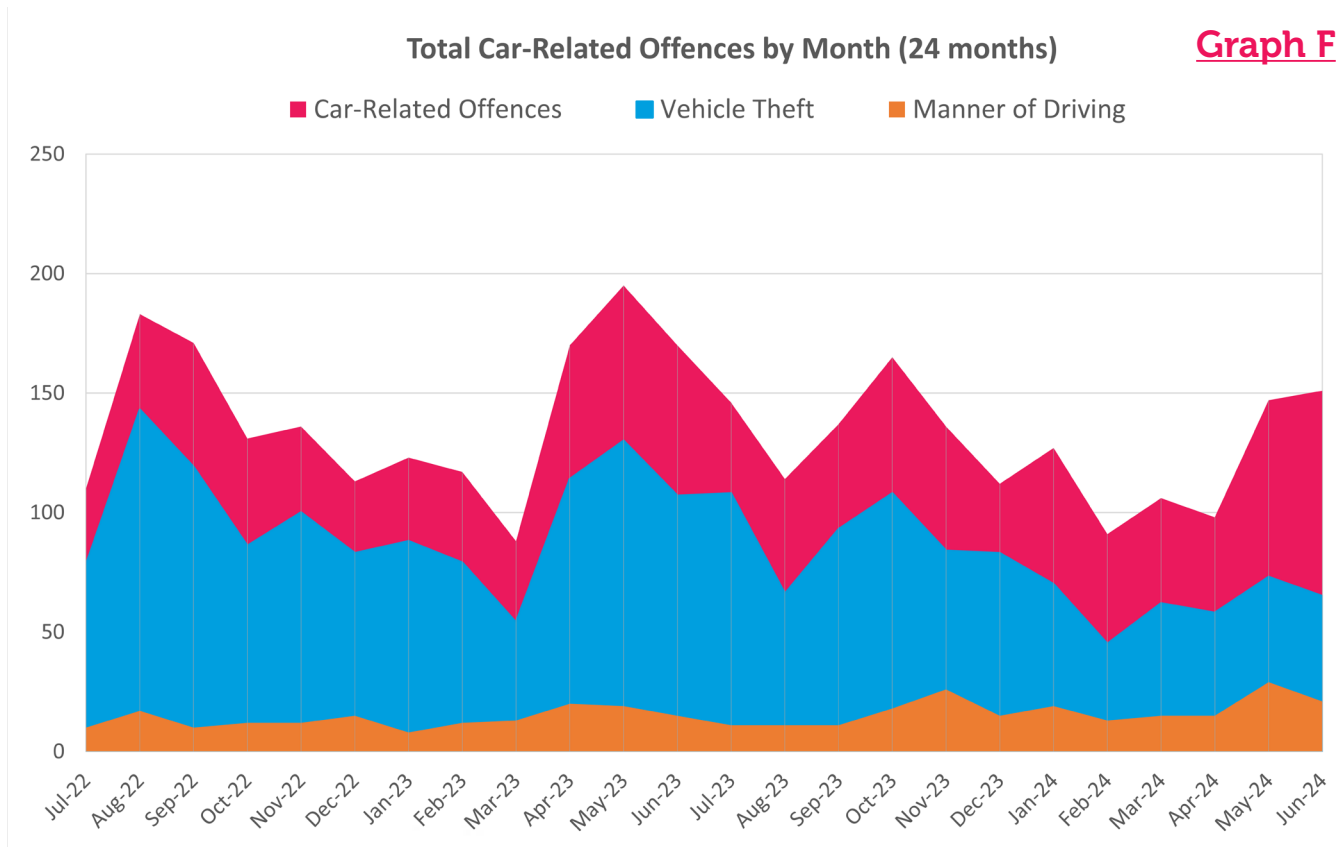
Graph E shows a three month moving average of all non-commercial property crimes for each category beginning with the first full quarter of 2022. The chart smooths out short-term fluctuations and highlights longer-term trends in the data.

3 Month Moving Average

Graph E



Graph F Compares Vehicle Theft & Manner of Driving rates to the total number of Car-Related offences for the last two years. Vehicle Theft follows a similar trend line to the total and makes up a significant portion of the total car-related offenses.



Do your part. Report Crime.

Crimes that aren't reported, don't get counted. To keep crime stats accurate, it's important we all report crimes regardless of the likely outcome. Having the attitude of "The police can't or won't do anything" only ensures your crime isn't part of the database, which police use to identify "hotspots" and curtail overall offences. You never know, your reporting might help prevent a crime from happening to your neighbour.

Reporting a Burglary:

Dial 111 if a crime is happening.

Dial 105 if the crime has happened.

Or report online at [police.govt.nz/use-105](https://www.police.govt.nz/use-105).



Data Analysis (24 Months)

Robbery

Robbery rates were relatively low and stable throughout the period, with minor fluctuations.

Theft

Theft incidents showed significant variation, with peaks and troughs indicating sporadic increases in theft activity.

Burglary

Burglary incidents were consistently high, with noticeable peaks, especially around mid-2023.

Vehicle Theft

This category had consistently high numbers, peaking significantly around mid-2023 and showing a decreasing trend towards mid-2024.

Manner of Driving

Offences related to driving, such as excessive acceleration or "burnouts", showed some peaks, particularly in Q4 2023.

Destruction of Property (Wilful Damage)

This category displayed consistent numbers with occasional spikes, indicating intermittent increases in property damage.

Disorderly Behaviour

Disorderly behaviour remained relatively low and stable throughout the period.

Car-Related Offences

Car-related offences were notably high, with significant peaks around Q3 2023 and a reduction in Q1 2024, followed by an increase in Q2 2024.

External Influences

Holiday Seasons

Peaks in offences, particularly burglary and car-related offences, coincide with holiday seasons such as Christmas and New Year. Increases in theft and burglary in December 2022 and December 2023 suggest that holidays might be a contributing factor.

School Terms

Crime rates might be influenced by school holidays, with potential increases in juvenile delinquency during these periods. Peaks in certain offences such as theft and vehicle theft during school holidays (April, July, and October) indicate a possible correlation.

Seasons

Crime rates, particularly car-related offences and theft, show variations across different seasons, with some categories peaking during warmer months. Increased activity during summer months (December to February) might be due to higher public activity and longer daylight hours.

What can I do?

You can take actions now that will help lower your (and your neighbour's) risk of being a target of crime. Here are some online resources and tips. You can find many more on the Neighbourhood Support New Zealand [website](#).

[Protecting Your Home](#)

[Improving Your Neighbourhood](#)

[Vehicle Safety & Security](#)

[Community Cams FAQs](#)

[Preventing Fraud and Scams](#)

[Preventing Mail Theft](#)

Join NSPD

Neighbourhood Support is FREE to join and offers lots of benefits:

- Have opportunities to connect with those around you.
- Receive emails with what's happening in your community.
- Get tips to improve the safety of your home and your community.
- Learn how to get prepared for emergencies.
- Be invited to attend community events organised by Neighbourhood Support.



By staying connected and supporting each other, we can make our neighbourhoods safe and welcoming for all.

Want to join the NSPD? Visit our [sign up page](#) or email us at nspapakura@gmail.com